

Converting Colors

Yxy(76.9338, 0.3256, 0.3313)

Have a look what the booklet for
Yxy(76.9338, 0.3256, 0.3313)
contains.

Yxy(77.1105, 0.3254, 0.3311)	3
<i>Conversions</i>	4
<i>Details</i>	6
<i>Harmonies</i>	12
<i>Previews</i>	24
<i>Color Blindness Simulation</i>	27
<i>CSS Examples</i>	30

Color

Yxy(77.1105, 0.3254, 0.3311)

Conversions

Conversions Part 1

Format	Color
Hex	F0E0DE
RGB	240, 224, 222
RGB Percent	94%, 88%, 87%
CMY	0.0587, 0.1216, 0.1294
CMYK	0.00, 0.07, 0.08, 0.06
HSL	7°, 38%, 91%
HSV	7°, 8%, 94%
XYZ	75.7830, 77.1105, 79.9984
YIQ	228.5560, 10.1780, 2.7700

Conversions

Conversions Part 2

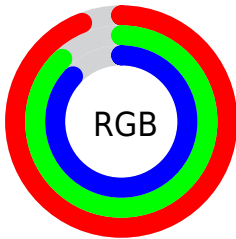
Format	Color
R _Y B	240, 224, 222
Decimal	15786206
CIE Lab	90.37, 5.14, 2.93
CIE LCh	90, 5.916, 29.704
Yxy	77.1105, 0.3254, 0.3311
Android (android.graphics.Color)	4293976286 (0xFFFF0E0DE)
YUV	228.5560, -3.2321, 10.0364
Hunter-Lab	87.8126, 0.3750, 7.4549

Details

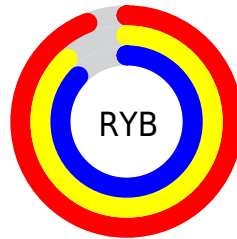
The Yxy color **77.1105, 0.3254, 0.3311** is a light color, and the websafe version is hex **CCCCCC**. A complement of this color would be **82.9938, 0.3011, 0.3269**, and the grayscale version is **78.0346, 0.3127, 0.3290**.

A 20% lighter version of the original color is **100.0000, 0.3127, 0.3290**, and **41.3563, 0.3283, 0.3317** is the 20% darker color. If you saturate the color by 10%, you get **65.1528, 0.3457, 0.3341**, and if you desaturate by 10%, it is **90.6990, 0.3089, 0.3283**.

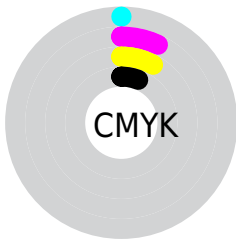
Distribution



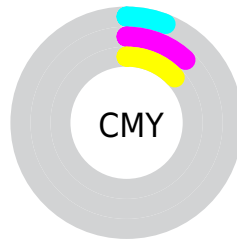
- Red (94%)
- Green (88%)
- Blue (87%)



- Red (94%)
- Yellow (88%)
- Blue (87%)



- Cyan (0%)
- Magenta (7%)
- Yellow (8%)
- Black (6%)



- Cyan (6%)
- Magenta (12%)
- Yellow (13%)

Brightness & Saturation Gradients

These gradients show how the Yxy color 77.1105, 0.3254, 0.3311 changes by changing the brightness by 10 percent. The first figure shows a shift by +10% for each color and the second figure -10%.

Similar to the brightness gradients but the following saturation gradients show a change of the Yxy color 77.1105, 0.3254, 0.3311 by changing the saturation by 10% instead.

77.1105, 0.3254,
0.3311

77.1105, 0.3254,
0.3311

485.1407, 0.3196,
0.3302

57.3436, 0.3267,
0.3313

129.2955, 0.3234,
0.3308

41.2811, 0.3284,
0.3315

162.4823, 0.3226,
0.3307

28.5388, 0.3304,
0.3319

200.9112, 0.3219,
0.3306

18.7322, 0.3331,
0.3322

244.9665, 0.3213,
0.3305

11.4770, 0.3368,
0.3327

295.0328, 0.3208,
0.3304

6.3886, 0.3420,
0.3334

351.4943, 0.3204,

3.0828, 0.3502,

0.3303

414.7355, 0.3199,
0.3302

0.3344

1.1751, 0.3646,
0.3359

0.0412, 0.7997,
0.2003

77.1105, 0.3254,
0.3311

77.1105, 0.3254,
0.3311

65.1528, 0.3457,
0.3341

90.6990, 0.3089,
0.3283

54.7550, 0.3706,
0.3372

97.2704, 0.3036,
0.3290

45.8556, 0.4009,
0.3404

38.3855, 0.4371,
0.3432

■ 32.2700, 0.4787,
0.3453

■ 27.4275, 0.5237,
0.3462

■ 23.7678, 0.5676,
0.3451

■ 21.1885, 0.6043,
0.3418

■ 19.5685, 0.6282,
0.3369

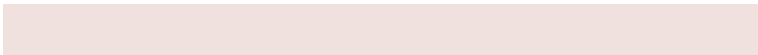
Harmonies

Analogous

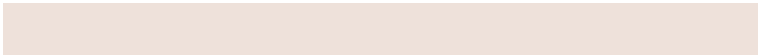
The Analogous color harmony consists of three colors that are next to each other on the color wheel.



77.1105, 0.3210, 0.3250



77.1105, 0.3254, 0.3311



77.1105, 0.3264, 0.3368

Triad

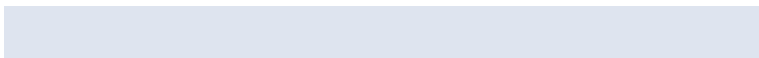
The Triadic color harmony groups three colors that are evenly spaced from another and form a triangle on the color wheel.



77.1105, 0.3254, 0.3311



77.1105, 0.3110, 0.3383



77.1105, 0.3019, 0.3177

Complementary

The Complementary color scheme is a pair of colors which are on the opposite of each other on the color wheel.



77.1105, 0.3254, 0.3311



82.9938, 0.3011, 0.3269

Split Complementary

Split-complementary colors differ from the complementary color scheme. The scheme consists of three colors, the original color and two neighbors of the complement color.



77.1105, 0.2993, 0.3211



77.1105, 0.3254, 0.3311



77.1105, 0.3045, 0.3331

Square

The Square scheme is like the rectangle color scheme, but the four colors are evenly spaced on the color wheel.



77.1105, 0.3254, 0.3311



77.1105, 0.3180, 0.3410



77.1105, 0.3002, 0.3267



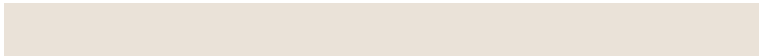
77.1105, 0.3074, 0.3173

Rectangle

The Rectangle color scheme consists of four colors that form a rectangle on the color wheel.



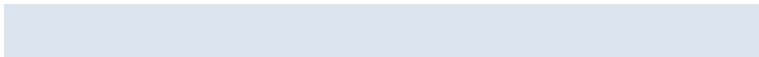
77.1105, 0.3254, 0.3311



77.1105, 0.3249, 0.3395



77.1105, 0.3002, 0.3267



77.1105, 0.3006, 0.3185

Sweetspot

The Sweet Spot groups the original color and five complimentary colors.



77.1139, 0.3254, 0.3311



96.8156, 0.3159, 0.3296



76.9614, 0.3148, 0.3124



20.7559, 0.3158, 0.3295



0.0000, 0.0000, 0.0000



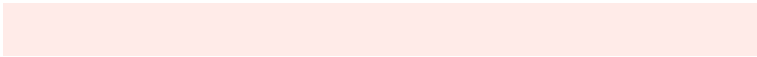
21.4041, 0.3127, 0.3290

Same Dimension

The Same Dimension uses a secret algorithm to generate beautiful new colors.



77.1139, 0.3254, 0.3311



86.2694, 0.3282, 0.3315



81.9801, 0.3245, 0.3402



16.0400, 0.3291, 0.3317



10.6518, 0.6309, 0.3372



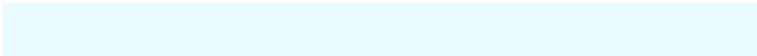
0.9783, 0.6126, 0.3518

Inverse Universe

The Inverse Universe completely reimagines the original color for something new.



82.9938, 0.3011, 0.3269



94.2962, 0.2988, 0.3264



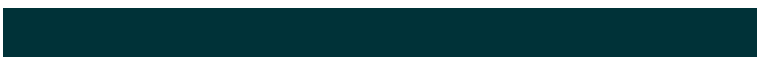
77.9804, 0.3011, 0.3176



17.6130, 0.2981, 0.3263



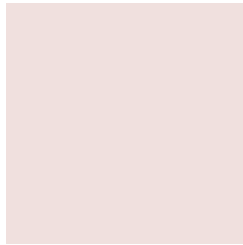
29.7467, 0.2150, 0.2939



2.5591, 0.2164, 0.2989

Previews

White Background



This preview shows how the Yxy color 77.1105, 0.3254, 0.3311 looks on a white background.

Color Contrast Check

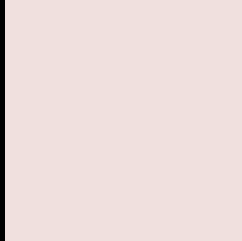
Large Text (above 18pt) WCAG AA × Fail

Any Text WCAG AA × Fail

Large Text (above 18pt) WCAG AAA × Fail

Any Text WCAG AAA × Fail

Black Background



This preview shows how the Yxy color 77.1105, 0.3254, 0.3311 looks on a black background.

Color Contrast Check

Large Text (above 18pt) WCAG AA ✓ Pass

Any Text WCAG AA ✓ Pass

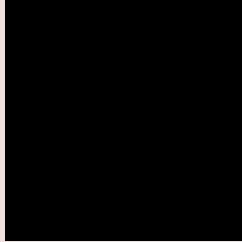
Large Text (above 18pt) WCAG AAA ✓ Pass

Any Text WCAG AAA ✓ Pass

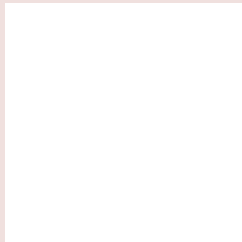
If you want to check with other color combinations, try the [Color Contrast Checker](#).

Yxy 77.1105, 0.3254, 0.3311

Background



This preview shows how black text looks on a background with the Yxy color 77.1105, 0.3254, 0.3311.

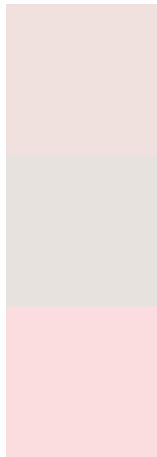


This preview shows how white text looks on a background with the Yxy color 77.1105, 0.3254, 0.3311.

Color Blindness Simulation

Color vision deficiency is a very complex topic, and I could not describe the different causes any better than Wikipedia does, so if you want to learn more, you should check out their [article about color blindness](#).

Dichromacy



Original Color

77.1105, 0.3254, 0.3311

Protanopia

76.8762, 0.3189, 0.3322

Deuteranopia

77.0233, 0.3331, 0.3260



Tritanopia

76.8221, 0.3157, 0.3107

Trichromacy



Original Color

77.1105, 0.3254, 0.3311

Protanomaly

76.8403, 0.3211, 0.3311

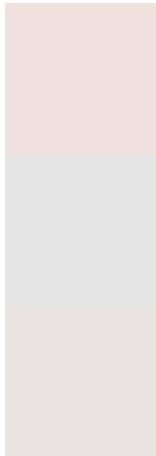
Deuteranomaly

76.8148, 0.3301, 0.3270

Tritanomaly

76.8265, 0.3189, 0.3177

Monochromacy



Original Color

77.1105, 0.3254, 0.3311

Achromatopsia

78.3538, 0.3127, 0.3290

Achromatomaly

77.7528, 0.3175, 0.3301

CSS Examples

Text

The CSS property to change the color of the text to Yxy 77.1105, 0.3254, 0.3311 is called "color". The color property can be set on classes, ids or directly on the HTML element.

This example shows how text in the color `rgb(240, 224, 222)` looks like.

```
.text, #text, p{  
    color:rgb(240, 224, 222)  
}
```

If you want to add a text shadow in that color use the text-shadow property, you can generate a text shadow directly with our [CSS Text Shadow Generator](#).

Here you see how black text with a 4 pixel rgb(240, 224, 222) colored shadow looks like.

```
.shadow{ text-shadow: 4px 4px 2px rgb(240, 224, 222) }
```

Border

The CSS property to change the border of an element to Yxy 77.1105, 0.3254, 0.3311 is called "border". The border property can be set on classes, ids or directly on the HTML element.

This example shows the color as border, it can be applied via the CSS property "border" or "border-color".

```
.border, #border, table{ border:4px solid rgb(240, 224, 222) }
```

If only the border color should be changed use the property border-color.

```
.border{ border-color:rgb(240, 224, 222) }
```

If you want to add a box shadow in that color use:

Here you see how a box with a 4 pixel rgb(240, 224, 222) colored shadow looks like.

```
.boxshadow{ -moz-box-shadow:4px 4px 4px  
4px rgb(240, 224, 222); -webkit-box-  
shadow:4px 4px 4px 4px rgb(240, 224, 222);  
box-shadow:4px 4px 4px 4px rgb(240, 224,  
222) }
```


Background

The CSS property to change the background color of an element to Yxy 77.1105, 0.3254, 0.3311 is called "background". The background property can be set on classes, ids or directly on the HTML element.

```
.background, #background, body{  
background: rgb(240, 224, 222) }
```

If only the background color should be changed can be used:

```
.background{ background-color: rgb(240,  
224, 222) }
```

This example shows the color as background, it is applied via the CSS property "background".

To optimize and compress your CSS code, you can use our [online CSS compressor and optimizer](#) based on csstidy. If you want to create a linear or radial gradient as background or border, check our [CSS Gradient Generator](#).

Hey! You found this booklet interesting? Support Converting Colors with the new Membership Option!

The pro membership hides all ads, plus gives you double the colors in the color bucket, and more awesome pro features!

[Learn more, Memberships starting at \\$2.50/m!](#)

**Follow me
on Twitter!**

@ConvertingColor