

Converting Colors

$Yxy(77.0747, 0.3232, 0.3293)$

Have a look what the booklet for
Yxy(77.0747, 0.3232, 0.3293)
contains.

Yxy(77.0438, 0.3233, 0.3290)	3
Conversions	4
Details	6
Harmonies	12
Previews	24
Color Blindness Simulation	27
CSS Examples	30

Color

Yxy(77.0438, 0.3233, 0.3290)

Conversions

Conversions Part 1

Format	Color
Hex	EFE0E0
RGB	239, 224, 224
RGB Percent	94%, 88%, 88%
CMY	0.0628, 0.1216, 0.1214
CMYK	0.00, 0.06, 0.06, 0.06
HSL	360°, 32%, 91%
HSV	360°, 6%, 94%
XYZ	75.7090, 77.0438, 81.4229
YIQ	228.4850, 8.9400, 3.1800

Conversions

Conversions Part 2

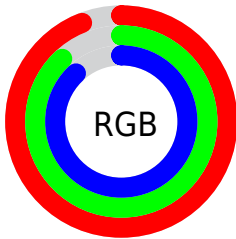
Format	Color
R_{YB}	239, 224, 224
Decimal	15720672
CIE Lab	90.34, 5.12, 1.81
CIE LCh	90, 5.431, 19.506
Yxy	77.0438, 0.3233, 0.3290
Android (android.graphics.Color)	4293910752 (0xFFEFE0E0)
YUV	228.4850, -2.2111, 9.2217
Hunter-Lab	87.7746, 0.3576, 6.4427

Details

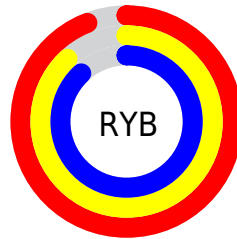
The Yxy color $77.0438, 0.3233, 0.3290$ is a light color, and the websafe version is hex `CCCCCC`. A complement of this color would be $83.8095, 0.3030, 0.3290$, and the grayscale version is $77.9712, 0.3127, 0.3290$.

A 20% lighter version of the original color is $100.0000, 0.3127, 0.3290$, and $41.3078, 0.3256, 0.3290$ is the 20% darker color. If you saturate the color by 10%, you get $63.8854, 0.3436, 0.3290$, and if you desaturate by 10%, it is $92.1961, 0.3071, 0.3290$.

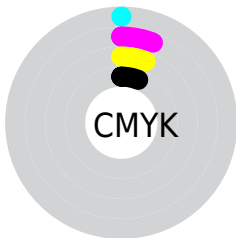
Distribution



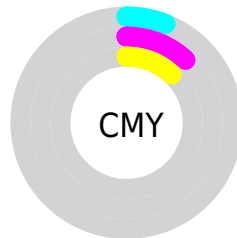
- Red (94%)
- Green (88%)
- Blue (88%)



- Red (94%)
- Yellow (88%)
- Blue (88%)



- Cyan (0%)
- Magenta (6%)
- Yellow (6%)
- Black (6%)





- Cyan (6%)
- Magenta (12%)
- Yellow (12%)

Brightness & Saturation Gradients


These gradients show how the Yxy color 77.0438, 0.3233, 0.3290 changes by changing the brightness by 10 percent. The first figure shows a shift by +10% for each color and the second figure -10%.

Similar to the brightness gradients but the following saturation gradients show a change of the Yxy color 77.0438, 0.3233, 0.3290 by changing the saturation by 10% instead.


 77.0438, 0.3233,
0.3290

 77.0438, 0.3233,
0.3290


484.9134, 0.3184,
0.3290

 57.2888, 0.3244,
0.3290

129.2013, 0.3216,
0.3290

 41.2372, 0.3258,
0.3290


162.3726, 0.3210,
0.3290

 28.5045, 0.3275,
0.3290


200.7849, 0.3204,
0.3290

 18.7063, 0.3297,
0.3289

244.8224, 0.3199,
0.3290

 11.4582, 0.3328,
0.3289

294.8696, 0.3195,
0.3290

 6.3759, 0.3371,
0.3288

351.3109, 0.3191,

 3.0750, 0.3439,

0.3290

414.5307, 0.3187,
0.3290

0.3285

1.1710, 0.3559,
0.3280

0.0378, 0.8097,
0.1903

77.0438, 0.3233,
0.3290

77.0438, 0.3233,
0.3290

63.8854, 0.3436,
0.3290

92.1961, 0.3071,
0.3290

52.6284, 0.3691,
0.3290

97.0902, 0.3029,
0.3290

43.1880, 0.4006,
0.3291

35.4690, 0.4390,
0.3292

■ 29.3677, 0.4836,
0.3293

■ 24.7692, 0.5318,
0.3294

■ 21.5433, 0.5780,
0.3296

■ 19.5381, 0.6145,
0.3297

■ 18.5640, 0.6352,
0.3299

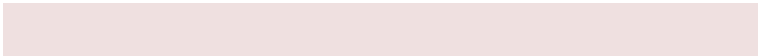
Harmonies

Analogous

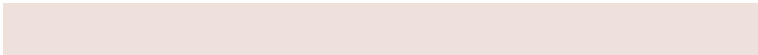
The Analogous color harmony consists of three colors that are next to each other on the color wheel.



77.0438, 0.3184, 0.3236



77.0438, 0.3233, 0.3290



77.0438, 0.3253, 0.3345

Triad

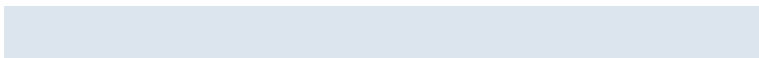
The Triadic color harmony groups three colors that are evenly spaced from another and form a triangle on the color wheel.



77.0438, 0.3233, 0.3290



77.0438, 0.3133, 0.3387



77.0438, 0.3016, 0.3194

Complementary

The Complementary color scheme is a pair of colors which are on the opposite of each other on the color wheel.



77.0438, 0.3233, 0.3290



83.8095, 0.3030, 0.3290

Split Complementary

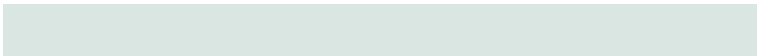
Split-complementary colors differ from the complementary color scheme. The scheme consists of three colors, the original color and two neighbors of the complement color.



77.0438, 0.3003, 0.3233



77.0438, 0.3233, 0.3290



77.0438, 0.3070, 0.3346

Square

The Square scheme is like the rectangle color scheme, but the four colors are evenly spaced on the color wheel.



77.0438, 0.3233, 0.3290



77.0438, 0.3195, 0.3402



77.0438, 0.3023, 0.3289



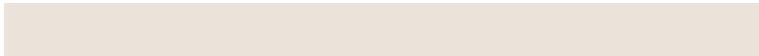
77.0438, 0.3059, 0.3180

Rectangle

The Rectangle color scheme consists of four colors that form a rectangle on the color wheel.



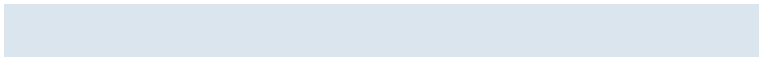
77.0438, 0.3233, 0.3290



77.0438, 0.3248, 0.3375



77.0438, 0.3023, 0.3289



77.0438, 0.3008, 0.3204

Sweetspot

The Sweet Spot groups the original color and five complimentary colors.



77.0472, 0.3233, 0.3290



96.4655, 0.3159, 0.3290



77.8520, 0.3133, 0.3137



20.6846, 0.3158, 0.3290



0.0000, 0.0000, 0.0000



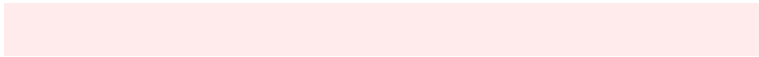
21.4041, 0.3127, 0.3290

Same Dimension

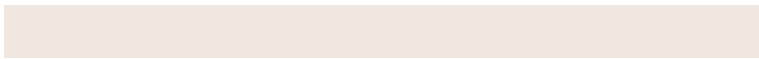
The Same Dimension uses a secret algorithm to generate beautiful new colors.



77.0472, 0.3233, 0.3290



86.4251, 0.3265, 0.3290



81.0245, 0.3227, 0.3365



15.7593, 0.3293, 0.3290



10.1418, 0.6399, 0.3299



0.8439, 0.6394, 0.3296

Inverse Universe

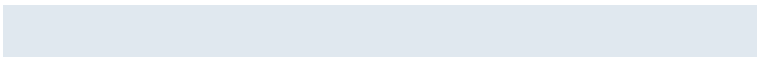
The Inverse Universe completely reimagines the original color for something new.



77.0472, 0.3233, 0.3290



86.4251, 0.3265, 0.3290



79.6526, 0.3031, 0.3214



15.7593, 0.3293, 0.3290



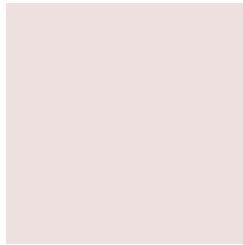
10.1418, 0.6399, 0.3299



0.8439, 0.6394, 0.3296

Previews

White Background



This preview shows how the Yxy color 77.0438, 0.3233, 0.3290 looks on a white background.

Color Contrast Check

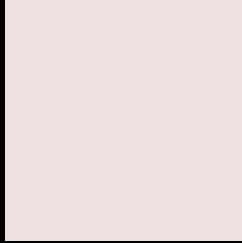
Large Text (above 18pt) WCAG AA × Fail

Any Text WCAG AA × Fail

Large Text (above 18pt) WCAG AAA × Fail

Any Text WCAG AAA × Fail

Black Background



This preview shows how the Yxy color 77.0438, 0.3233, 0.3290 looks on a black background.

Color Contrast Check

Large Text (above 18pt) WCAG AA ✓ Pass

Any Text WCAG AA ✓ Pass

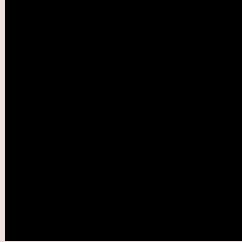
Large Text (above 18pt) WCAG AAA ✓ Pass

Any Text WCAG AAA ✓ Pass

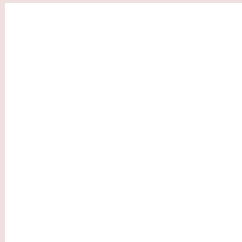
If you want to check with other color combinations, try the [Color Contrast Checker](#).

Yxy 77.0438, 0.3233, 0.3290

Background



This preview shows how black text looks on a background with the Yxy color 77.0438, 0.3233, 0.3290.

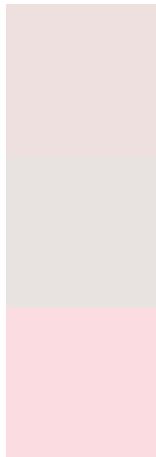


This preview shows how white text looks on a background with the Yxy color 77.0438, 0.3233, 0.3290.

Color Blindness Simulation

Color vision deficiency is a very complex topic, and I could not describe the different causes any better than Wikipedia does, so if you want to learn more, you should check out their [article about color blindness](#).

Dichromacy



Original Color

77.0438, 0.3233, 0.3290

Protanopia

76.9848, 0.3176, 0.3301

Deuteranopia

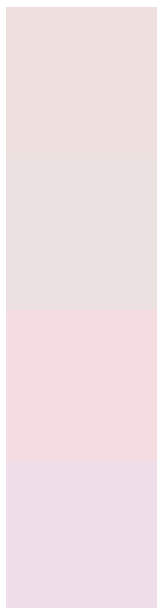
76.9466, 0.3310, 0.3240



Tritanopia

77.1753, 0.3149, 0.3117

Trichromacy



Original Color

77.0438, 0.3233, 0.3290

Protanomaly

76.9488, 0.3197, 0.3290

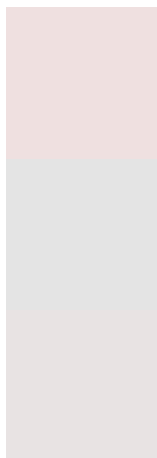
Deuteranomaly

76.7420, 0.3280, 0.3250

Tritanomaly

77.2411, 0.3175, 0.3177

Monochromacy



Original Color

77.0438, 0.3233, 0.3290

Achromatopsia

77.5822, 0.3127, 0.3290

Achromatomaly

77.6400, 0.3162, 0.3290

CSS Examples

Text

The CSS property to change the color of the text to Yxy 77.0438, 0.3233, 0.3290 is called "color". The color property can be set on classes, ids or directly on the HTML element.

This example shows how text in the color `rgb(239, 224, 224)` looks like.

```
.text, #text, p{  
    color:rgb(239, 224, 224)  
}
```

If you want to add a text shadow in that color use the text-shadow property, you can generate a text shadow directly with our [CSS Text Shadow Generator](#).

Here you see how black text with a 4 pixel rgb(239, 224, 224) colored shadow looks like.

```
.shadow{ text-shadow: 4px 4px 2px rgb(239, 224, 224) }
```

Border

The CSS property to change the border of an element to Yxy 77.0438, 0.3233, 0.3290 is called "border". The border property can be set on classes, ids or directly on the HTML element.

This example shows the color as border, it can be applied via the CSS property "border" or "border-color".

```
.border, #border, table{ border:4px solid rgb(239, 224, 224) }
```

If only the border color should be changed use the property `border-color`.

```
.border{ border-color:rgb(239, 224, 224) }
```

If you want to add a box shadow in that color use:

Here you see how a box with a 4 pixel `rgb(239, 224, 224)` colored shadow looks like.

```
.boxshadow{ -moz-box-shadow:4px 4px 4px  
4px rgb(239, 224, 224); -webkit-box-  
shadow:4px 4px 4px 4px rgb(239, 224, 224);  
box-shadow:4px 4px 4px 4px rgb(239, 224,  
224) }
```


Background

The CSS property to change the background color of an element to Yxy 77.0438, 0.3233, 0.3290 is called "background". The background property can be set on classes, ids or directly on the HTML element.

```
.background, #background, body{  
background: rgb(239, 224, 224) }
```

If only the background color should be changed can be used:

```
.background{ background-color: rgb(239,  
224, 224) }
```

This example shows the color as background, it is applied via the CSS property "background".

To optimize and compress your CSS code, you can use our [online CSS compressor and optimizer](#) based on csstidy. If you want to create a linear or radial gradient as background or border, check our [CSS Gradient Generator](#).

Hey! You found this booklet interesting? Support Converting Colors with the new Membership Option!

The pro membership hides all ads, plus gives you double the colors in the color bucket, and more awesome pro features!

[Learn more, Memberships starting at \\$2.50/m!](#)

**Follow me
on Twitter!**

@ConvertingColor