

Converting Colors

$Yxy(86.8627, 0.4668, 0.3394)$

Have a look what the booklet for
Yxy(86.8627, 0.4668, 0.3394)
contains.

Yxy(59.3564, 0.3838, 0.3439)	3
Conversions	4
Details	6
Harmonies	12
Previews	24
Color Blindness Simulation	27
CSS Examples	30

Color

Yxy(59.3564, 0.3838, 0.3439)

Conversions

Conversions Part 1

Format	Color
Hex	FFBAAC
RGB	255, 186, 172
RGB Percent	100%, 73%, 67%
CMY	0.0000, 0.2705, 0.3255
CMYK	0.00, 0.27, 0.33, 0.00
HSL	10°, 100%, 84%
HSV	10°, 33%, 100%
XYZ	66.2431, 59.3564, 46.9984
YIQ	205.0350, 45.6180, 10.2740

Conversions

Conversions Part 2

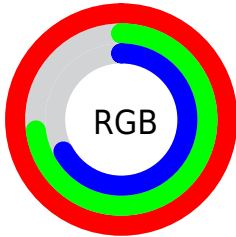
Format	Color
R _Y B	255, 189, 172
Decimal	16759468
CIE Lab	81.49, 23.10, 16.93
CIE LCh	81, 28.644, 36.238
Yxy	59.3564, 0.3838, 0.3439
Android (android.graphics.Color)	4294949548 (0xFFFFBAAC)
YUV	205.0350, -16.2863, 43.8193
Hunter-Lab	77.0431, 18.6521, 17.7617

Details

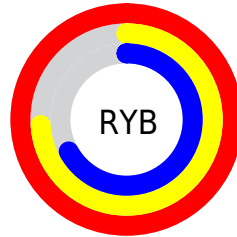
The Yxy color **59.3564, 0.3838, 0.3439** is a light color, and the websafe version is hex **FFCCCC**. A complement of this color would be **78.8939, 0.2642, 0.3134**, and the grayscale version is **61.1594, 0.3127, 0.3290**.

A 20% lighter version of the original color is **90.3103, 0.3306, 0.3438**, and **29.7289, 0.4028, 0.3454** is the 20% darker color. If you saturate the color by 10%, you get **50.1926, 0.4158, 0.3485**, and if you desaturate by 10%, it is **70.0385, 0.3570, 0.3391**.

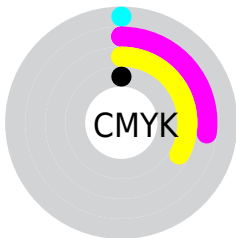
Distribution



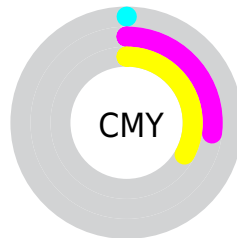
- Red (100%)
- Green (73%)
- Blue (67%)



- Red (100%)
- Yellow (74%)
- Blue (67%)



- Cyan (0%)
- Magenta (27%)
- Yellow (33%)
- Black (0%)



- Cyan (0%)
- Magenta (27%)
- Yellow (33%)

Brightness & Saturation Gradients


These gradients show how the Yxy color 59.3564, 0.3838, 0.3439 changes by changing the brightness by 10 percent. The first figure shows a shift by +10% for each color and the second figure -10%.


Similar to the brightness gradients but the following saturation gradients show a change of the Yxy color 59.3564, 0.3838, 0.3439 by changing the saturation by 10% instead.

 59.3564, 0.3838,
0.3439

 59.3564, 0.3838,
0.3439


422.2214, 0.3493,
0.3377

 42.9001, 0.3920,
0.3451


 103.8955, 0.3715,
0.3419

 29.8067, 0.4024,
0.3464


132.7470, 0.3669,
0.3411

 19.6919, 0.4158,
0.3479


166.4991, 0.3629,
0.3404

 12.1713, 0.4338,
0.3493

205.5361, 0.3594,
0.3397

 6.8605, 0.4591,
0.3505

250.2425, 0.3564,
0.3392

 3.3750, 0.4968,
0.3500

301.0025, 0.3538,

 1.3305, 0.5849,

0.3386

0.3606

358.2007, 0.3514,
0.3382

0.1646, 0.8140,
0.1860

0.0000, 0.0000,
0.0000

59.3564, 0.3838,
0.3439

59.3564, 0.3838,
0.3439

50.1926, 0.4158,
0.3485

70.0385, 0.3570,
0.3391

42.4699, 0.4532,
0.3525

82.2949, 0.3349,
0.3344

36.1166, 0.4949,
0.3551

96.1891, 0.3168,
0.3301

31.0517, 0.5381,
0.3554

99.9981, 0.3127,
0.3290

■ 27.1855, 0.5782,
0.3527

■ 24.4160, 0.6096,
0.3469

■ 22.9879, 0.6255,
0.3415

Harmonies

Analogous

The Analogous color harmony consists of three colors that are next to each other on the color wheel.



59.3564, 0.3631, 0.3138



59.3564, 0.3838, 0.3439



59.3564, 0.3839, 0.3723

Triad

The Triadic color harmony groups three colors that are evenly spaced from another and form a triangle on the color wheel.



59.3564, 0.3838, 0.3439



59.3564, 0.2942, 0.3755



59.3564, 0.2617, 0.2693

Complementary

The Complementary color scheme is a pair of colors which are on the opposite of each other on the color wheel.



59.3564, 0.3838, 0.3439



78.8939, 0.2642, 0.3134

Split Complementary

Split-complementary colors differ from the complementary color scheme. The scheme consists of three colors, the original color and two neighbors of the complement color.



59.3564, 0.2458, 0.2812



59.3564, 0.3838, 0.3439



59.3564, 0.2637, 0.3424

Square

The Square scheme is like the rectangle color scheme, but the four colors are evenly spaced on the color wheel.



59.3564, 0.3838, 0.3439



59.3564, 0.3309, 0.3939



59.3564, 0.2465, 0.3073



59.3564, 0.2914, 0.2723

Rectangle

The Rectangle color scheme consists of four colors that form a rectangle on the color wheel.



59.3564, 0.3838, 0.3439



59.3564, 0.3725, 0.3867



59.3564, 0.2465, 0.3073



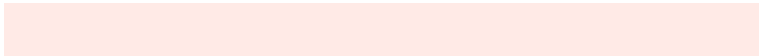
59.3564, 0.2547, 0.2716

Sweetspot

The Sweet Spot groups the original color and five complimentary colors.



59.3592, 0.3838, 0.3439



85.6786, 0.3300, 0.3333



57.1265, 0.3274, 0.2601



17.9366, 0.3327, 0.3339



0.0000, 0.0000, 0.0000



21.4041, 0.3127, 0.3290

Same Dimension

The Same Dimension uses a secret algorithm to generate beautiful new colors.



59.3592, 0.3838, 0.3439



53.2765, 0.4039, 0.3469



79.3555, 0.3702, 0.3854



18.4822, 0.3290, 0.3331



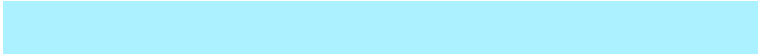
12.1566, 0.6233, 0.3433



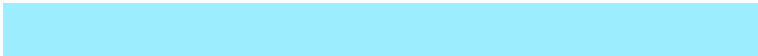
1.3154, 0.6039, 0.3587

Inverse Universe

The Inverse Universe completely reimagines the original color for something new.



78.8939, 0.2642, 0.3134



75.5194, 0.2557, 0.3098



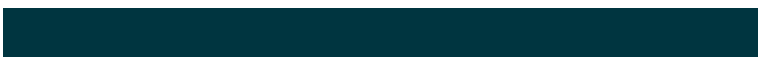
57.1460, 0.2582, 0.2652



19.9289, 0.2980, 0.3249



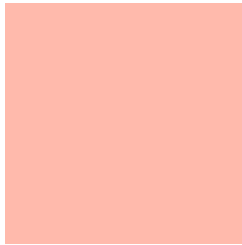
28.5612, 0.2095, 0.2741



2.9129, 0.2114, 0.2811

Previews

White Background



This preview shows how the Yxy color 59.3564, 0.3838, 0.3439 looks on a white background.

Color Contrast Check

Large Text (above 18pt) WCAG AA × Fail

Any Text WCAG AA × Fail

Large Text (above 18pt) WCAG AAA × Fail

Any Text WCAG AAA × Fail

Black Background



This preview shows how the Yxy color 59.3564, 0.3838, 0.3439 looks on a black background.

Color Contrast Check

Large Text (above 18pt) WCAG AA ✓ Pass

Any Text WCAG AA ✓ Pass

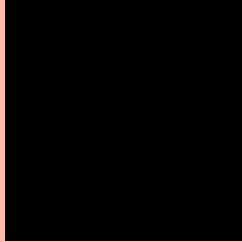
Large Text (above 18pt) WCAG AAA ✓ Pass

Any Text WCAG AAA ✓ Pass

If you want to check with other color combinations, try the [Color Contrast Checker](#).

Yxy 59.3564, 0.3838, 0.3439

Background



This preview shows how black text looks on a background with the Yxy color 59.3564, 0.3838, 0.3439.



This preview shows how white text looks on a background with the Yxy color 59.3564, 0.3838, 0.3439.

Color Blindness Simulation

Color vision deficiency is a very complex topic, and I could not describe the different causes any better than Wikipedia does, so if you want to learn more, you should check out their [article about color blindness](#).

Dichromacy



Original Color

59.3564, 0.3838, 0.3439

Protanopia

59.5334, 0.3369, 0.3549

Deuteranopia

59.4249, 0.3647, 0.3571



Tritanopia

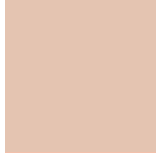
59.5722, 0.3627, 0.3156

Trichromacy



Original Color

59.3564, 0.3838, 0.3439



Protanomaly

59.1482, 0.3537, 0.3506



Deuteranomaly

59.5168, 0.3716, 0.3521



Tritanomaly

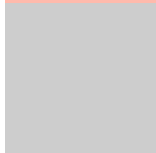
59.5888, 0.3702, 0.3260

Monochromacy



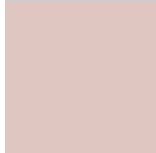
Original Color

59.3564, 0.3838, 0.3439



Achromatopsia

61.0496, 0.3127, 0.3290



Achromatomaly

59.9264, 0.3366, 0.3347

CSS Examples

Text

The CSS property to change the color of the text to Yxy 59.3564, 0.3838, 0.3439 is called "color". The color property can be set on classes, ids or directly on the HTML element.

This example shows how text in the color `rgb(255, 186, 172)` looks like.

```
.text, #text, p{  
    color:rgb(255, 186, 172)  
}
```

If you want to add a text shadow in that color use the text-shadow property, you can generate a text shadow directly with our [CSS Text Shadow Generator](#).

Here you see how black text with a 4 pixel rgb(255, 186, 172) colored shadow looks like.

```
.shadow{ text-shadow: 4px 4px 2px rgb(255, 186, 172) }
```

Border

The CSS property to change the border of an element to Yxy 59.3564, 0.3838, 0.3439 is called "border". The border property can be set on classes, ids or directly on the HTML element.

This example shows the color as border, it can be applied via the CSS property "border" or "border-color".

```
.border, #border, table{ border:4px solid rgb(255, 186, 172) }
```

If only the border color should be changed use the property `border-color`.

```
.border{ border-color:rgb(255, 186, 172) }
```

If you want to add a box shadow in that color use:

Here you see how a box with a 4 pixel `rgb(255, 186, 172)` colored shadow looks like.

```
.boxshadow{ -moz-box-shadow:4px 4px 4px  
4px rgb(255, 186, 172); -webkit-box-  
shadow:4px 4px 4px 4px rgb(255, 186, 172);  
box-shadow:4px 4px 4px 4px rgb(255, 186,  
172) }
```


Background

The CSS property to change the background color of an element to Yxy 59.3564, 0.3838, 0.3439 is called "background". The background property can be set on classes, ids or directly on the HTML element.

```
.background, #background, body{  
background: rgb(255, 186, 172) }
```

If only the background color should be changed can be used:

```
.background{ background-color: rgb(255,  
186, 172) }
```

This example shows the color as background, it is applied via the CSS property "background".

To optimize and compress your CSS code, you can use our [online CSS compressor and optimizer](#) based on csstidy. If you want to create a linear or radial gradient as background or border, check our [CSS Gradient Generator](#).

Hey! You found this booklet interesting? Support Converting Colors with the new Membership Option!

The pro membership hides all ads, plus gives you double the colors in the color bucket, and more awesome pro features!

[Learn more, Memberships starting at \\$2.50/m!](#)

**Follow me
on Twitter!**

@ConvertingColor